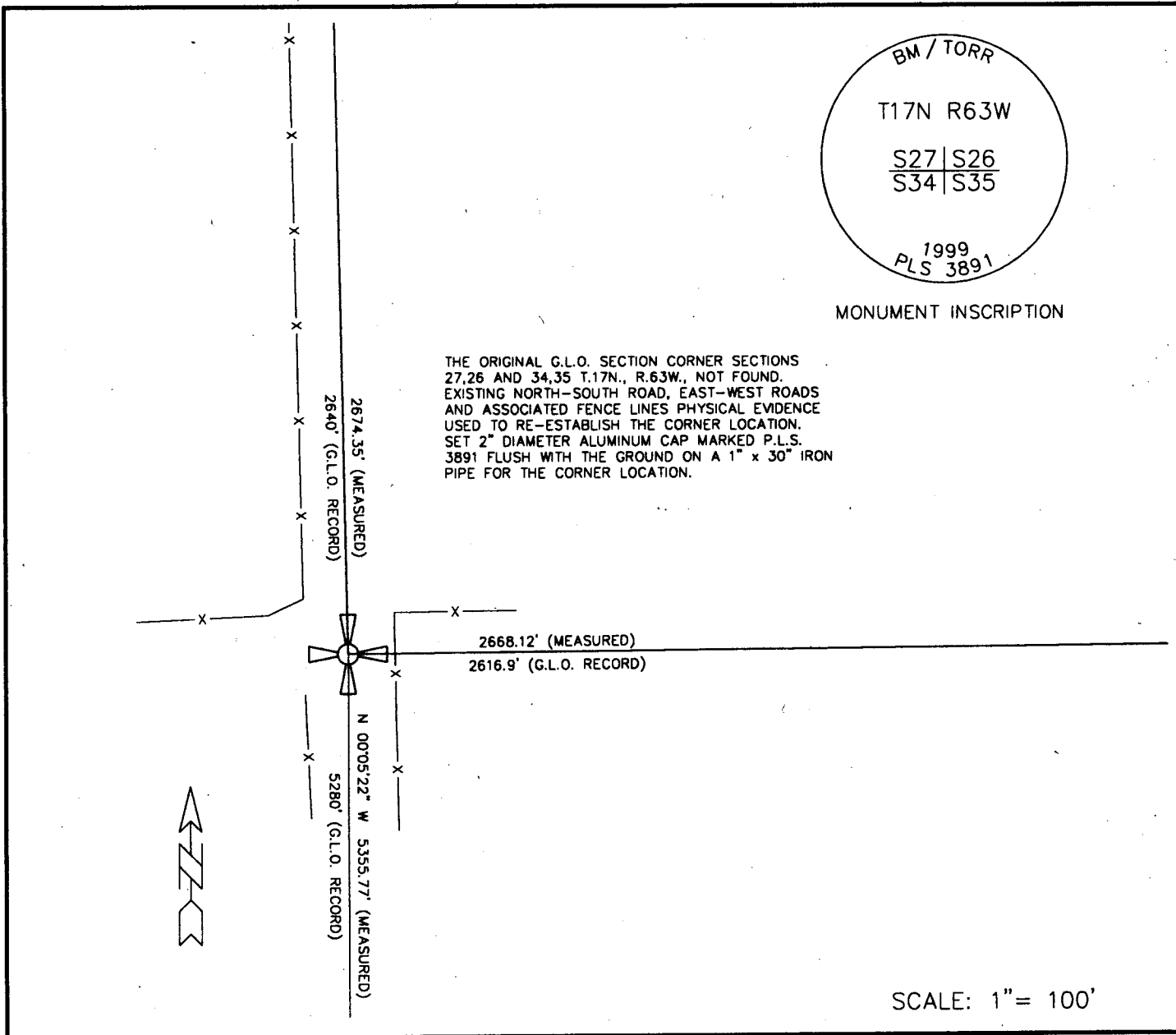


State of Wyoming Corner Record

(In compliance with the *CORNER PERPETUATION AND FILING ACT*, Wyoming Statutes, 1977, Section 36-11-101, et. seq., and the Rules and Regulations of the Board of Registration for Professional Engineers and Professional Land Surveyors)

Reverse side of this form may be used if more space is needed.

Record of original survey and citation of source of historical information (if corner is lost or obliterated). Description of corner monumentation evidence found and/or monument and accessories established to perpetuate the location of this corner. Sketch of relative location of monument, accessories, and reference points with course and distance to adjacent corner(s) (if determined in this survey). Method and rationale for reestablishment of lost or obliterated corner.



BM / TORR
 T17N R63W
 S27 | S26
 S34 | S35
 1999
 PLS 3891
 MONUMENT INSCRIPTION

THE ORIGINAL G.L.O. SECTION CORNER SECTIONS 27,26 AND 34,35 T.17N., R.63W., NOT FOUND. EXISTING NORTH-SOUTH ROAD, EAST-WEST ROADS AND ASSOCIATED FENCE LINES PHYSICAL EVIDENCE USED TO RE-ESTABLISH THE CORNER LOCATION. SET 2" DIAMETER ALUMINUM CAP MARKED P.L.S. 3891 FLUSH WITH THE GROUND ON A 1" x 30" IRON PIPE FOR THE CORNER LOCATION.

SCALE: 1" = 100'

Date of Field Work: JUNE, 1999


Office Reference: V-171763.dwg

CROSS INDEX DIAGRAM

	1	2	3	4	5	6	7	8	9	10	11	12	13	14	15	16	17	18	19	20	21	22	23	24	25
A																									
B																									
C	6				5					4					3					2					1
D																									
E																									
F																									
G																									
H																									
J																									
K																									
L																									
M																									
N																									
O																									
P																									
Q																									
R																									
S																									
T																									
U																									
V																									
W																									
X																									
Y																									
Z																									
	1	2	3	4	5	6	7	8	9	10	11	12	13	14	15	16	17	18	19	20	21	22	23	24	25

Firm/Agency, Address
 BenchMark of
Torrington, P.C.
2510 West "C" Street · P.O. Box 99
Torrington, WY 82240
 Phone Number: (307) 532-3811

This corner record was prepared by me or under my direction and supervision.
SEAL & SIGNATURE

Professional Land Surveyor
 ROBERT W. TAYLOR
 3891

 Date 2/22/2000
 WYOMING

Corner Name: NW CORNER Section: 35 T17N R63W 6th P.M. Cross-Index No.: V-17
 SBRPEPLS/PLSW: March 1994